



Social proof that you can measure

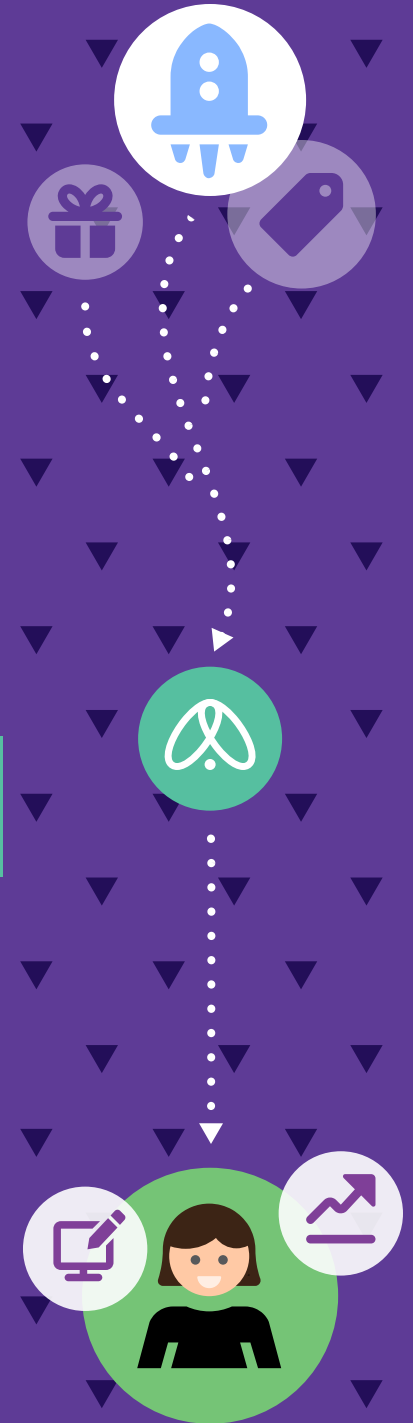
Kelly Rizzo  
@eattravelrock

## Who we are:

Lumanu is a robust community of influential content creators and innovative brands. Our mission is to forge lasting relationships between influencers and brands. We aspire to help our community share authentic stories through beautiful content that truly make an impact.

## What we offer:

When you join Lumanu, you will gain unparalleled access to collaboration opportunities with top brands. We will work with you - providing you with our expertise, world-class success team, and top-notch technology - to maximize the impact and success of your content. As partners, we will help you grow your social following and monetize your creative talents and engaged audience in more ways than ever before.



# Why you should partner with us:

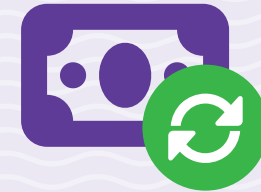


## Receive quality opportunities automatically.

Lumanu connects you with relevant brands without asking you to submit tedious content proposals.

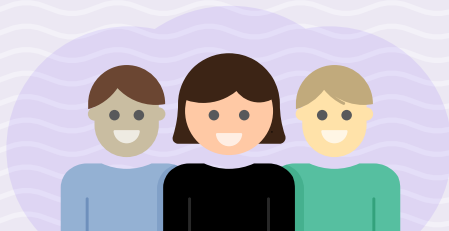


Work with your own personal Success Manager, who will answer any questions you have about being an influencer or working with brands.



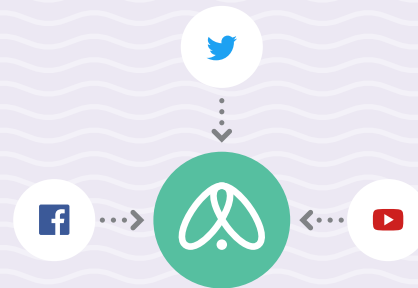
## Earn recurring income from brands.

Lumanu uses data algorithms to prove how influential your content truly is to brands you work with, leading to more repeat and lasting opportunities.



## Get additional exposure and grow your audience.

We will amplify your content on social media and through our brand partners at no cost to you.



## More ways to get rewarded for your creative talent and engaged audience.

Easily integrate your blog and social accounts with Lumanu to earn money in more ways than ever.



## Fast and effortless payouts.

Get paid via PayPal within 72 hours of successfully completing a campaign. *(with ACH deposits coming soon!)*



Interested in joining our community?  
Submit an application [here](#)

Want to talk? Email us at [success@lumanu.com](mailto:success@lumanu.com)